

**FOOT VALVE
DRY SHUT TYPE**

.....%\$\$\$ / % \$\$\$'65 F

.....SPARE PARTG

Salomon Jetting Parts B.V.

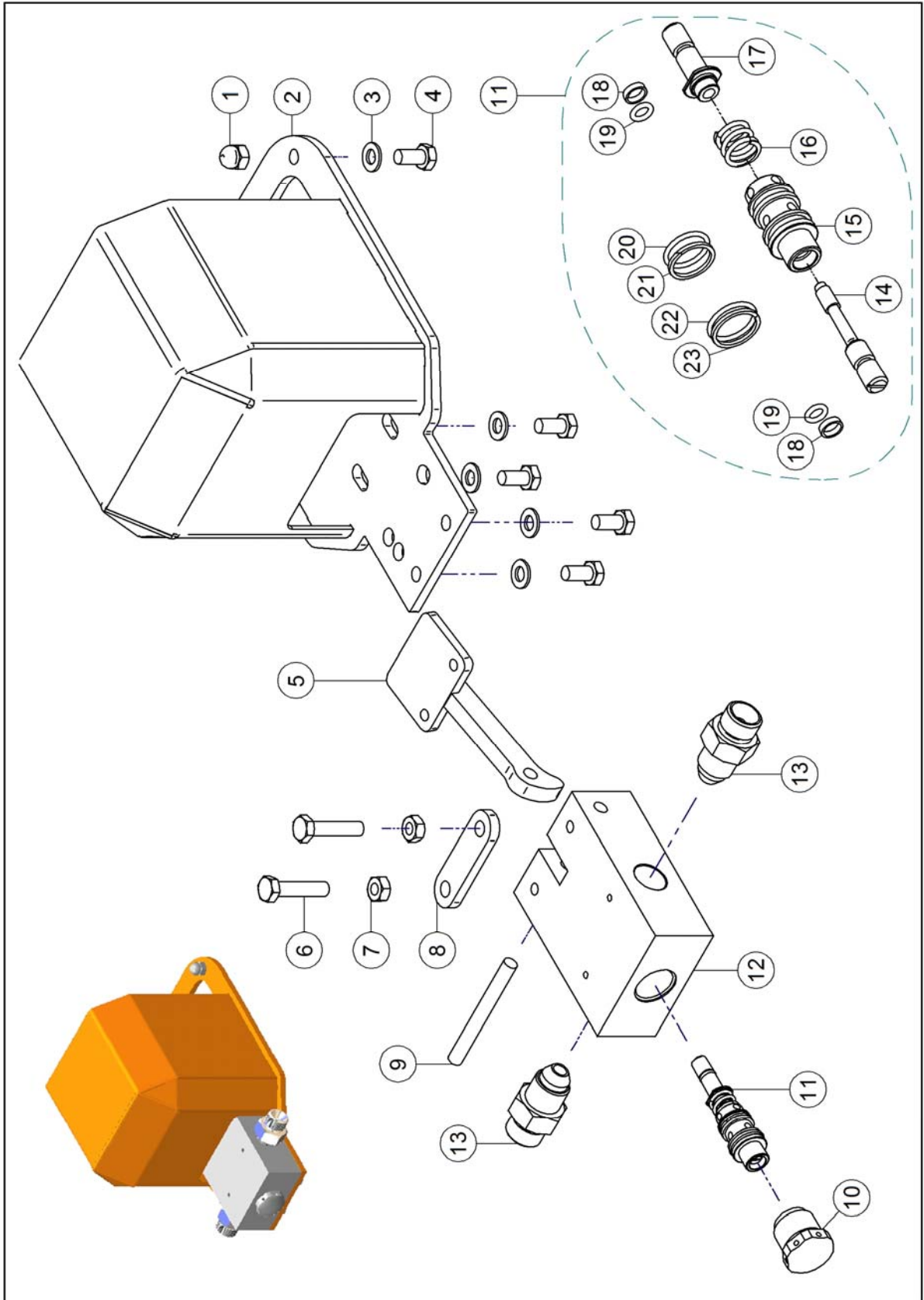
Hoeksedijk 109, 3299 AE Maasdam, The Netherlands

Tel: +31(0)88 126 1900 Fax +31(0)88 126 1999

e-mail: info@salomonjettingparts.com

web: www.salomonjettingparts.com

FOOT VALVE DRY SHUT 1\$\$\$ & %\$\$ 65 F
9LD@C898 J-9K



FOOT VALVE DRY SHUT 1\$\$\$&'¼ \$\$\$ 6 5 F
PARTS LIST

Pos.	Item No.	Qty	Description
	81400869		FOOT VALVE DRY SHUT 1400 BAR COMPLETE
	81400870		FOOT VALVE DRY SHUT 1000 BAR COMPLETE
1	80100633	2	DOME NUT
2	81000624	1	FOOT HOUSING
3	80100606	6	WASHER
4	80100703	6	SCREW
5	81400731	1	PEDAL
6	80100704	2	SCREW
7	80100672	2	NUT
8	81000722	1	BRACKET
9	81000730	1	PIN
10	81400068	1	PLUG
11	81400069	1	VALVE KIT
12	81401171	1	VALVE HOUSING
13	80500689	2	NIPPLE 1/2"BSPP M INLET-OUTLET*
13	80500733	2	NIPPLE 3/8"BSPP M INLET-OUTLET*
13	80500731	2	NIPPLE M22 x1,5 M INLET-OUTLET*
13	80500730	2	NIPPLE M24 M INLET-OUTLET*
13	80501089	2	NIPPLE 3/4"BSPP M INLET-OUTLET*

*Inlet & Outlet properties are customer's requirement
Inlet & Outlet may have different properties

REPAIR KITS

Item No./Kit Description	Pos.	Item No.	Qty.	Description
81400295 O-RING & PACKING REP KIT DRY SHUT	18	80200232	2	BACK UP RING
	19	80200061	2	O- RING
	20	80200070	1	O RING
	21	80200074	1	BACK UP RING
	22	80200059	1	O-RING
	23	80200060	1	BACK UP RING

Item No./Kit Description	Pos.	Item No.	Qty.	Description
81400069 VALVE KIT DRY SHUT	14	81400071	1	VALVE PIN
	15	81400072	1	VALVE SEAT
	16	80300063	1	SPRING
	17	81400073	1	ACTUATOR PIN
	18	80200232	2	BACK UP RING
	19	80200061	2	O- RING
	20	80200070	1	O RING
	21	80200074	1	BACK UP RING
	22	80200059	1	O-RING
	23	80200060	1	BACK UP RING